


Corporate profile

Samer&Co. shipping

History



- 1919 ● *EWL Agency Company Limited* is established in Trieste as the Italian outpost of the British ship owner *Ellerman & Wilson Lines*
- 1932 ● The company is appointed Lloyd's of London Agents
- 1962 ● Mr. Dario Samer becomes the first non-British manager
- 1972 ● Appointed Agents for the Institute of London Underwriters
- 1982 ● The Italian shareholders take over the company
- 1985 ● The company name is changed into  **Samer&Co. shipping**
- 1994 ● Italian ports are privatized, the company also becomes a port terminal operator
- 2016 ● *Samer International* is established
- 2019 ● Celebration of the company's first centenary
- 2021 ● Entering the trading industry

Customs-free port of Trieste



- Special status since 1719
- Unrestricted access/transit of goods
- Unlimited foreign status for goods
- Consignment stock
- Free export overseas
- Unlimited storage
- 180-day duties deferment
- Reduced port taxes
- Possible *Made in Italy* labelling
- Customs-free industrial processing
- Selection/Sampling of goods to be imported

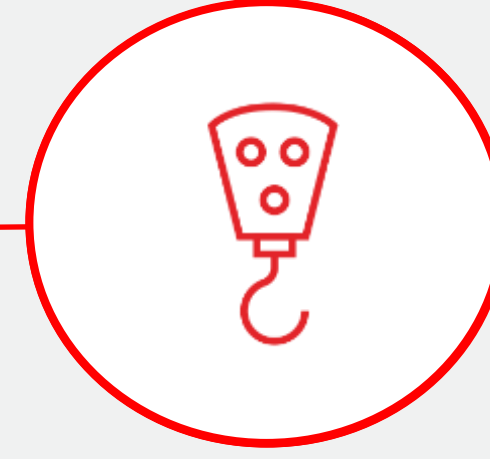
Business units



Ship agents
& brokers



Claims-settling
agents & surveyors



Port terminal
operators



International
freight forwarders

Ship agents & brokers



Liner & tramp vessels

Türkiye-Europe 'Sea Highway'

Yachts & mega yachts



- Liner agents
- Full agency/protecting agency service
- Crew assistance
- Stowage/Lashing plans
- Freight acquisition
- Chartering service
- Dry-docking/Refitting assistance
- Dangerous goods' shipments
- Assistance on spare parts



Ship agents & brokers

Assisting

- Liner & tramp vessels
- Ro-Ro/Bulk/Break-Bulk/Tank vessels
- Heavy lift vessels
- Cruise ships
- Yachts & mega yachts





Ship agents & brokers - Türkiye-Europe 'Sea Highway'



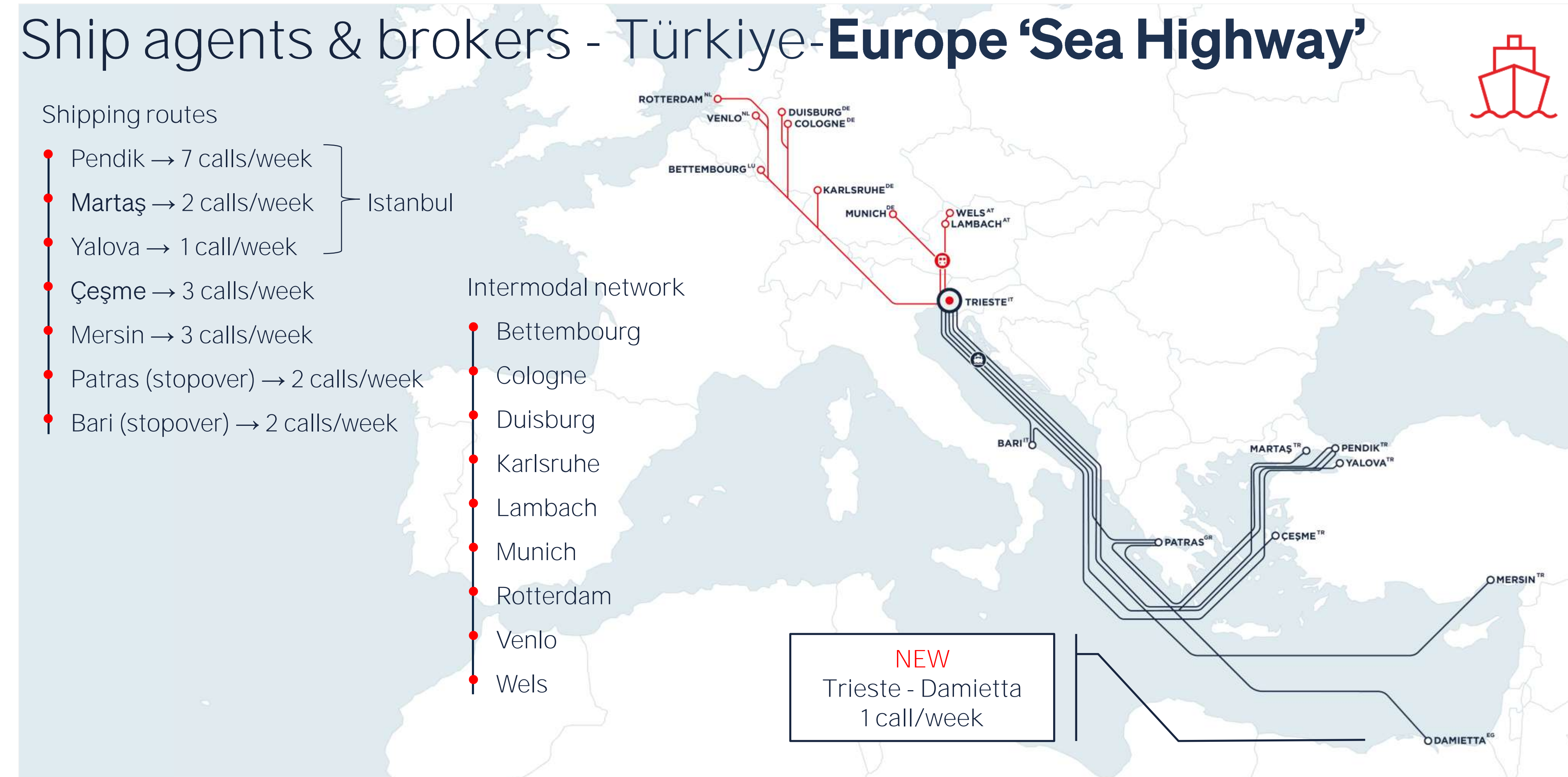
Shipping routes

- Pendik → 7 calls/week
 - Martaş → 2 calls/week
 - Yalova → 1 call/week
 - Çeşme → 3 calls/week
 - Mersin → 3 calls/week
 - Patras (stopover) → 2 calls/week
 - Bari (stopover) → 2 calls/week
- } Istanbul

Intermodal network

- Bettembourg
- Cologne
- Duisburg
- Karlsruhe
- Lambach
- Munich
- Rotterdam
- Venlo
- Wels

NEW
Trieste - Damietta
1 call/week



Ship agents & brokers - Türkiye-Europe 'Sea Highway'



Environmentally-friendly operations

- 16 sailings per week
- 450 trucks capacity/vessel
- 52-65 hours transit time
- Daily connection flights
- 90 multimodal trains/week
- ▼ carbon footprint by >400,000 tons/year
- 24/7 operations & customs formalities

2024 statistics

- 311,614 heavy units
- 102,987 TEUs
- 55,643 containers
- 34,831 new wheeled units
- 744 vessels



Ship agents & brokers

Yachts & mega yachts

- Berth reservations in exclusive marinas
- Yacht clearance and assistance to bureaucratic formalities
- Repairs and refitting
- General provisions




TRIESTE • YACHT • SERVICE
T.Y.S.



Claims-settling agents & surveyors



Lloyd's Agents

P&I Correspondents

Recoveries & surveys



- Lloyd's of London Agents since 1932 in Italy, Montenegro, Serbia, Albania and Slovenia
- Appointed P&I Correspondents for the most prestigious clubs worldwide
- Claims and settling agents for the main insurance companies worldwide
- Performing: condition surveys, claims adjustments, recoveries, pre/post shipment inspections, loss prevention, container inspection
- Marine and non-marine surveys

LLOYD'S

Agency



Port terminal operators



Ro-ro terminals

Intermodal terminal

Heavy lift terminal

Reefer terminal

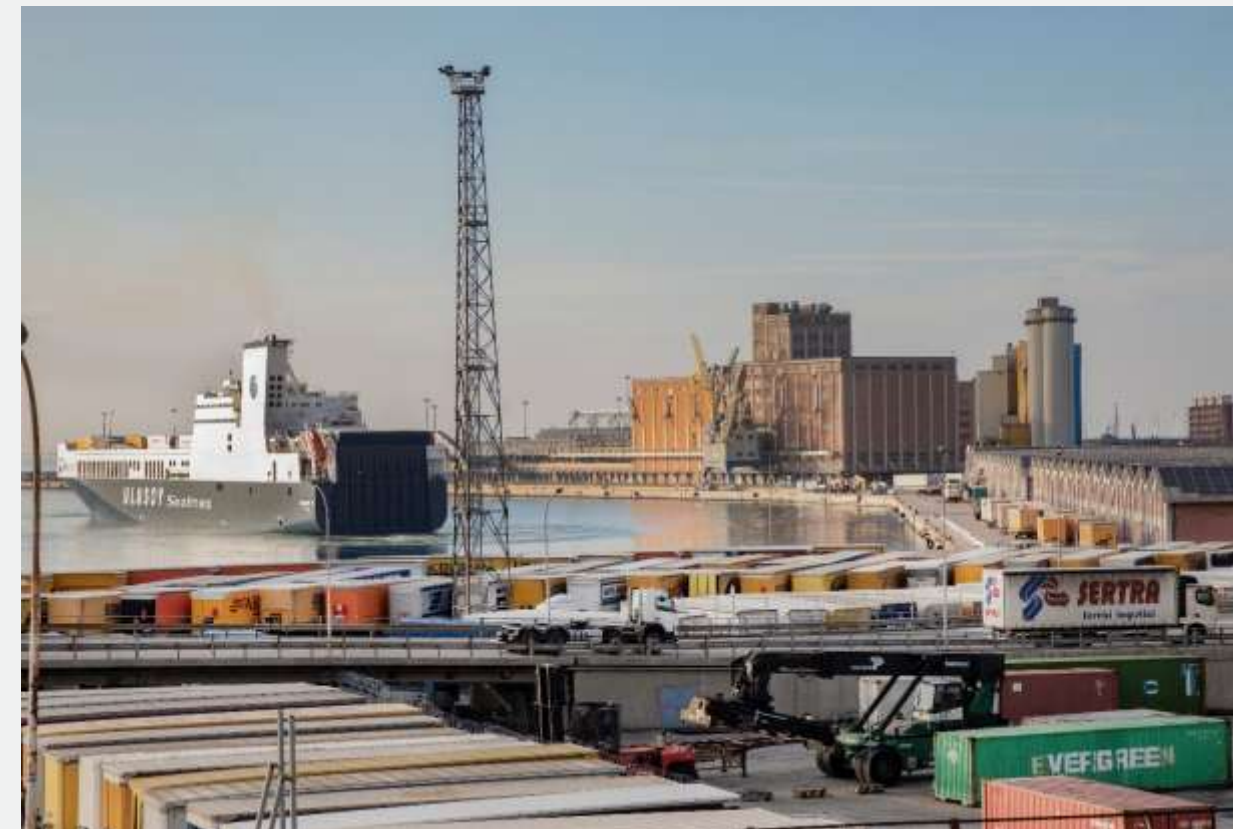


- Inside and outside the Customs Free Port of Trieste
- 24/7 operations
- Own equipment and facilities
- Skilled personnel
- Rail- and highway-connected
- Long-term investments

Port terminal operators

Ro-ro terminals

- 4 ro-ro ramps
- 9 operative berths
- 2,000 m. pier
- 250,000 m² storage area
- 39' draft
- 24/7 operations
- 24/7 customs formalities
- 43,500 m² warehouses (18,200 m² reefer)
- LME/LIFFE-approved warehouses



Port terminal operators

Intermodal terminal

- 4x310 m. tracks - 2 trains
- RMG crane
- 8 reach stackers
- 45 tug masters
- 24/7 operations
- Loading cranable/non-cranable semi-trailers, containers, tank containers
- Non-cranable units loaded with ISU and R2L equipment
- 3,189 trains in 2023



Port terminal operators

Heavy lift terminal

- 450 ton capacity shore crane
- 36-axle SPMT
- 180+180 m. pier
- 2,000+10,000 m² warehouses
- 30,000 m² open storage areas
- Mobile cranes up to 200 tons
- Forklifts up to 50 tons
- Gantry cranes up to 50 tons
- Lashing/Securing/Dunnaging/Welding
- Stowage/Lashing plans



Since 2007

- 675 heavy lift vessels
- 2,588 engines max. 300 tons
- 430 reels max. 480 tons
- 136,270,500 kg. hazelnuts



Port terminal operators

Reefer terminal

- 625 m. pier
- 30' draft
- 4 berths
- 51,500 m² warehouses
- 18,200 m² reefer warehouses
- 30,000 m² open storage areas
- Rail connection
- LME/LIFFE-approved warehouses



2024 statistics

- 73,662,500 kg. reefer cargo
- 22,781,670 kg. general cargo



International freight forwarders



Ocean freight

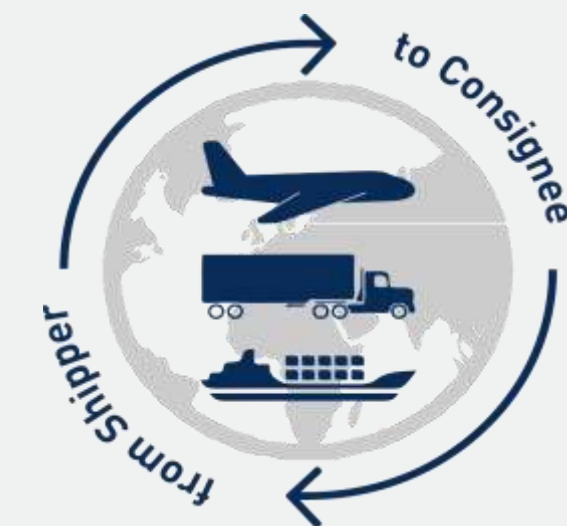
Air freight

Road & rail freight

Project cargo

Warehousing & logistics

- Worldwide door-to-door service
- Reefer cargo
- Customs-free storage
- Customs brokerage
- Cross trade
- Ad-hoc all-risk cargo insurance
- Cargo inspection, pre/post-shipment surveys



International freight forwarders

Ocean/Air/Road & rail freight

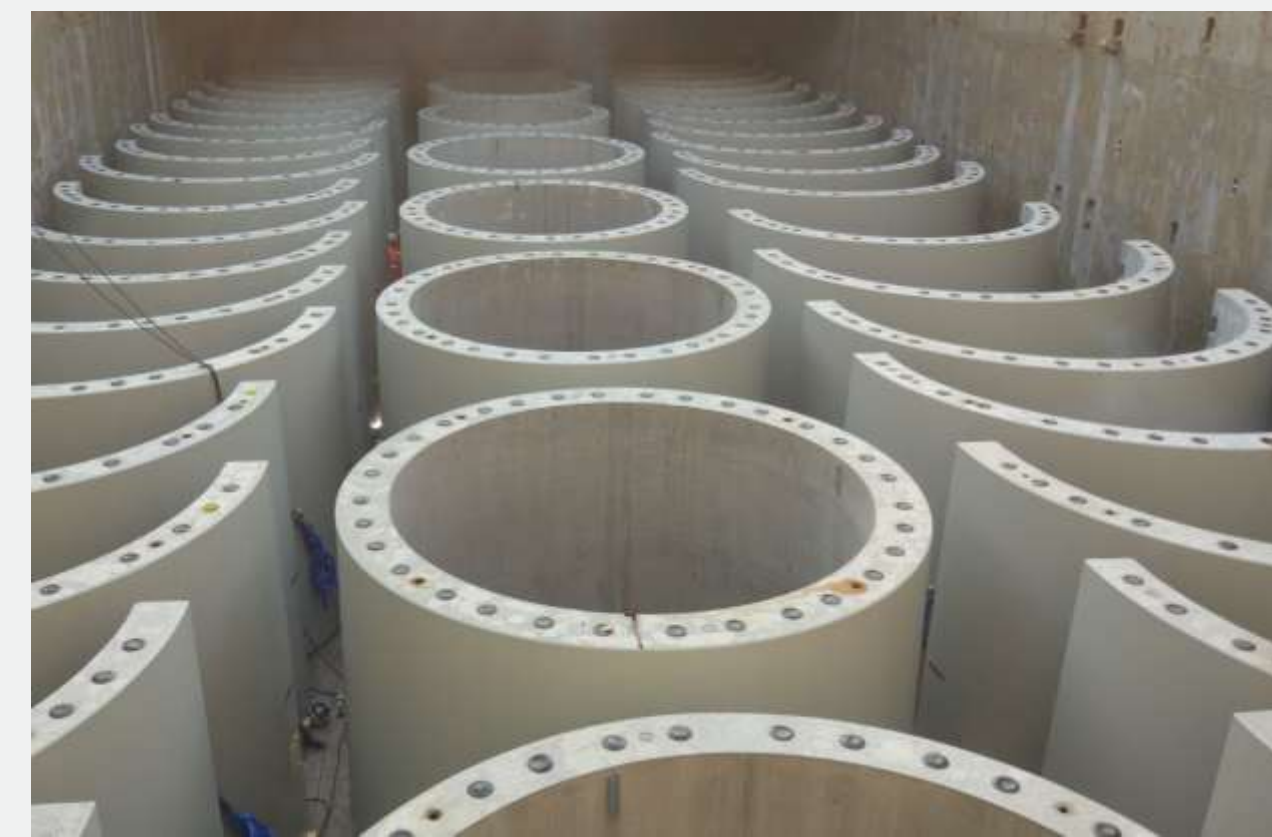
- FCL/LCL + FTL/LTL
- Bulk/Breakbulk cargo
- Multimodal transport
- GDP certified
- Perishable goods and temperature-controlled shipments
- Dangerous goods
- Stuffing/Unstuffing operations
- Ad-hoc storage



International freight forwarders

Project logistics

- Feasibility studies, route & site surveys
- Pre-carriage, loading and shipment of heavy lifts and OOG cargoes
- Full/part charter (time/voyage charters)
- Multimodal transport (rail, tug & barge)
- Special permits for exceptional convoys
- Traffic management & police escorts
- Transport insurance & risk management
- L/C processing and document management
- Customs clearance



International freight forwarders



Warehousing & logistics

- 230,000 m² own storage area
- 55,000 m² own warehouses
- 25,000 m² own reefer warehouses
- 4,200 semi-automated slots
- LME/LIFFE-approved warehouses
- Customs-bonded warehouses
- Rail-connected infrastructures



Offering

- Loading/Unloading and palletizing
- Labeling
- Weight control
- Sampling
- Consolidation





International freight forwarders



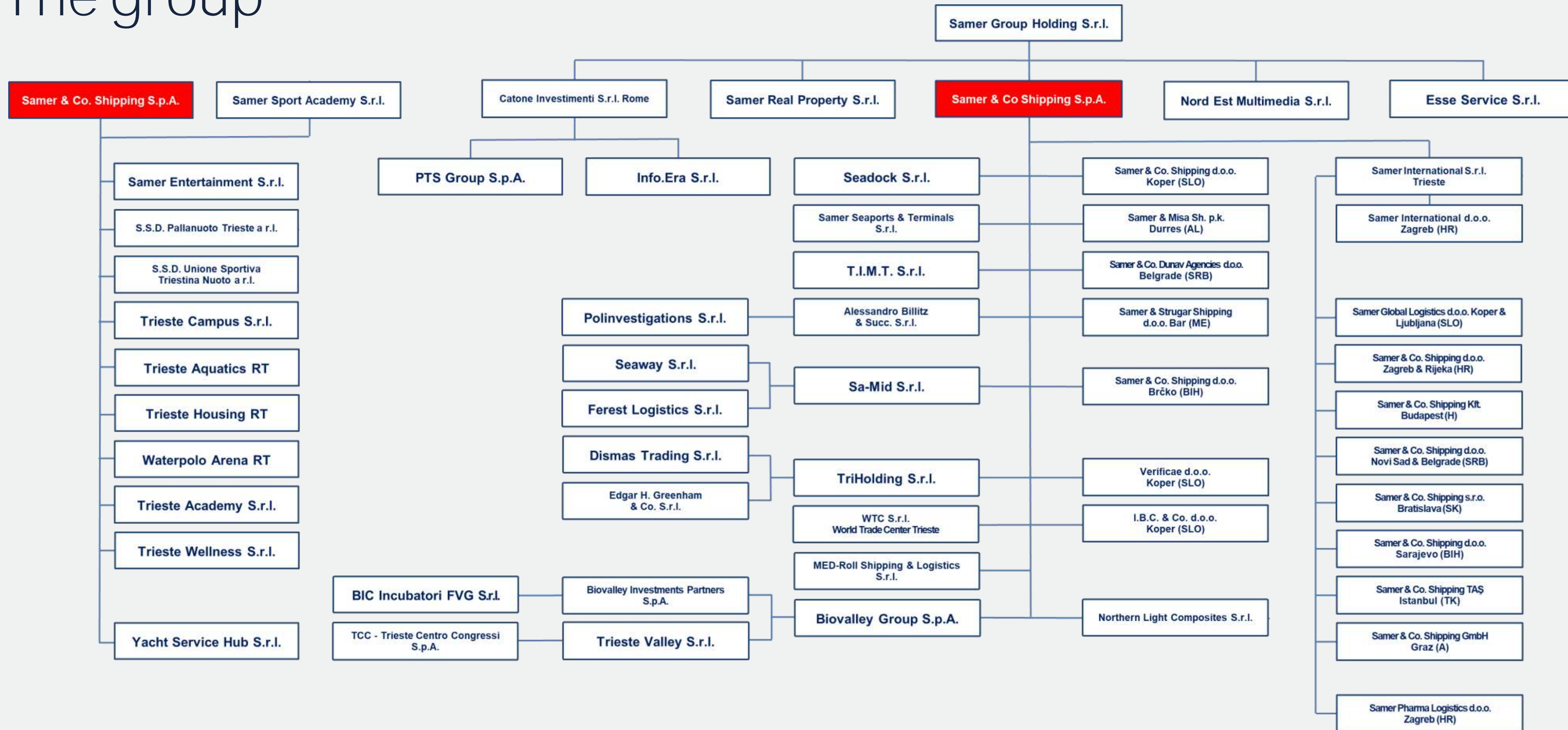
Overseas companies

- Austria → Graz
- Bosnia & Herzegovina → Sarajevo
- Croatia → Zagreb
- Hungary → Budapest
- Serbia → Belgrade & Novi Sad
- Slovakia → Bratislava
- Slovenia → Ljubljana & Koper
- Türkiye → Istanbul

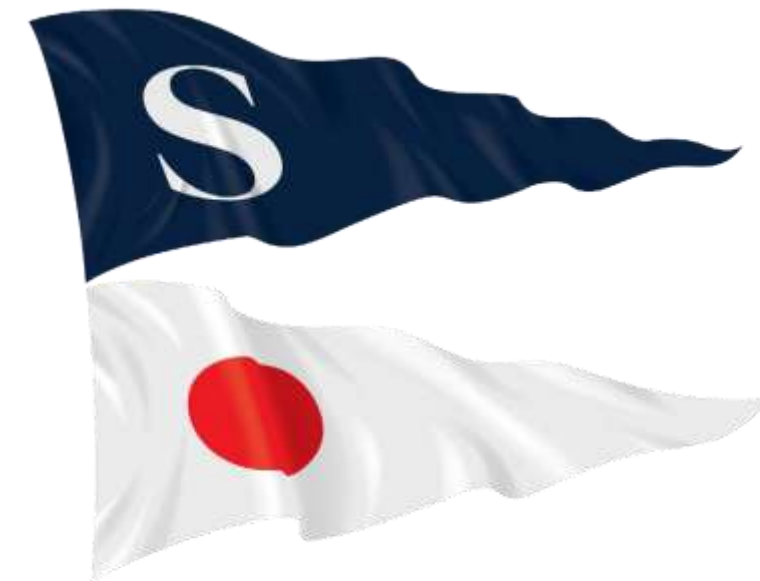
Covering also markets such as:
Albania, Bulgaria, Montenegro,
the Czech Republic, etc.



The group



Thank you



Samer&Co. shipping

For any additional information, please refer to:

- Ms. Rita Gollino
Corporate Development Manager
Business Development & Marketing dept.
T +39 040 67027259
M +39 334 6280270
rita.gollino@samer.com